

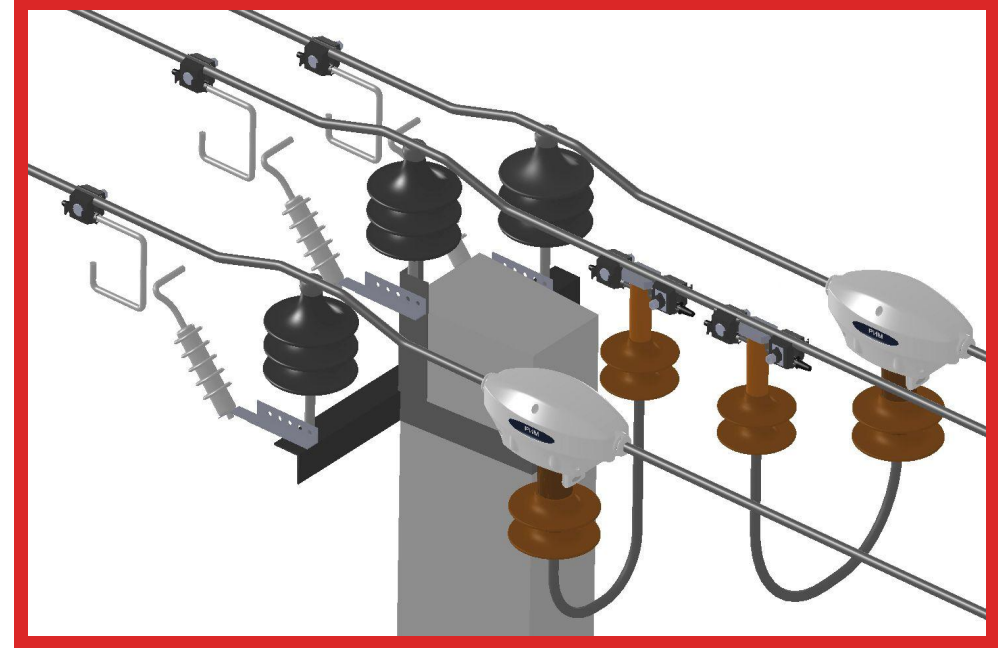
# Akanksha Power and Infrastructure Ltd



**Q**-Quality

**C**-Cost

**D**-Delivery



AKANKSHA has completed 16 years in the industry.

The company has its manufacturing set-up in Nashik, 160 K.M. from Mumbai, Maharashtra.

### **Vision**

To be the premier and a strategic player in the areas of AT&C loss reduction, to provide a sustainable and long-term growth to all the stakeholders of the company.

### **Mission**

To be an unparalleled strategic service and solution provider by leveraging our deep knowledge and expertise of the industry for better management of wasted electricity resources by the industries, energy transparency for the DISCOMs to identify and control the commercial losses in the system.





Intelligent electricity meters AkU 368 are multifunctional devices and are designed to measure active and reactive electrical energy; active, reactive and full power, phase currents and line voltages in three-phase three-wire AC electrical networks with an insulated neutral voltage 6/11 kV

Can be used autonomously or as part of automated electricity metering and control systems

Transmission of measured and calculated network parameters to the control room is carried out by the request of the operator or in automatic mode



**“AkU”  
a signature  
direct  
measuring  
device for  
Medium  
voltage**



# COMPARISON

## Existing Solution

Presently the medium voltage metering is done by using CT-PT metering Unit / Metering Cubical.

Bulky in size - Weight 170-300 kg.  
Dimensions 886x1230x1050 mm

Installation with the use of lifting machines, pole structures etc.

Use of secondary electrical circuit

Several elements (CT, VT, Meter, box, Poles etc.) are required.



## APIL's Solution

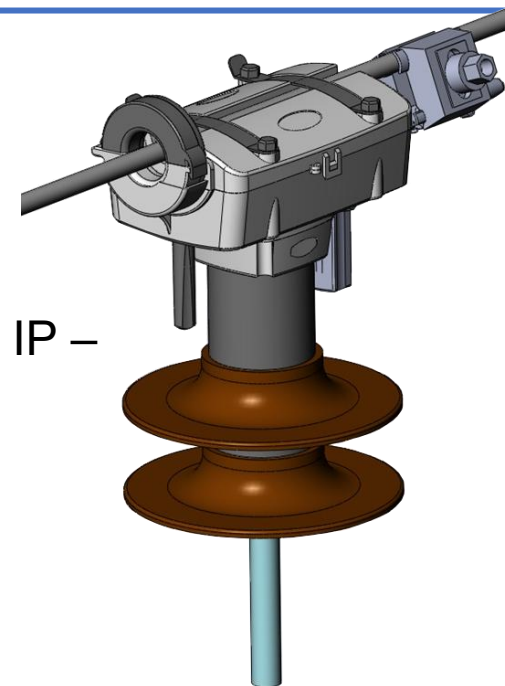
Proposed solution is a direct measurement device, outdoor, IP – 65 class, without any external CT/PT.

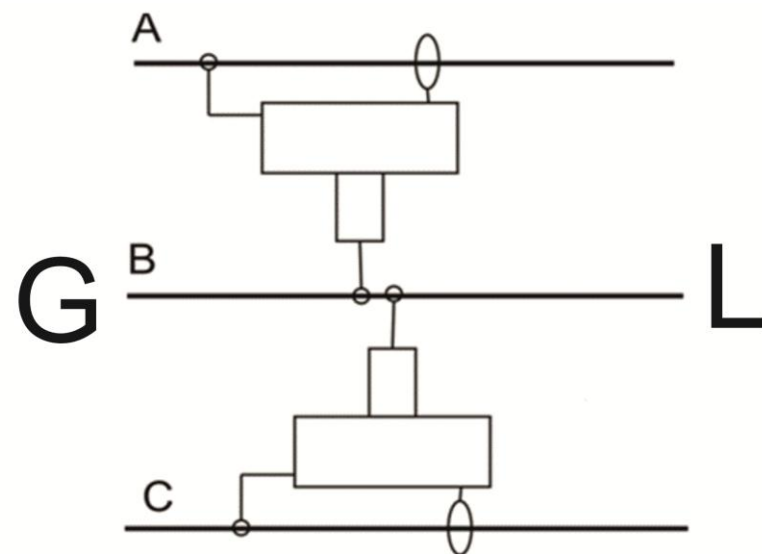
Weight is just 2.3 kg  
Dimensions 260x140x110 mm

Installation without the use of any lifting machine, even without cut/break in power line circuits.

No secondary electrical circuit required

No elements like CT, VT, Meter box etc. are required,





**“AkU”**  
*Electricity  
Measurement  
in networks  
with isolated  
neutral*





## **“AkU” Variants**

Execution	Basic current/maximal, A	Rated voltage, kV	Starting current, mA	Accuracy rating	Meter constant, cp/kWh
RiM 384.01	20/100	6	20	0,5 S /1,0	500
RiM 384.02	20/100	11	20	0,5 S /1,0	500
RiM 384.03	20/200	6	20	0,5 S /1,0	500
RiM 384.04	20/200	11	20	0,5 S /1,0	500



# Features

Placement directly on the power line or on the feeder.

Work both autonomously and as part of the AMI using GSM (redundancy with dual SIM cards) and RF interfaces.

High resistance to mechanical, climatic, and electromagnetic influences.

Ability to work with Mobile Terminal.

Ability to work with a remote display.

SMS messages in case of emergency situations (message mask can be set); automatic sending of SMS reports on a Schedule; Automatic sending of log data on a schedule (the log mask, sending period and destination address can be set).

Average service life of at least 16 years.



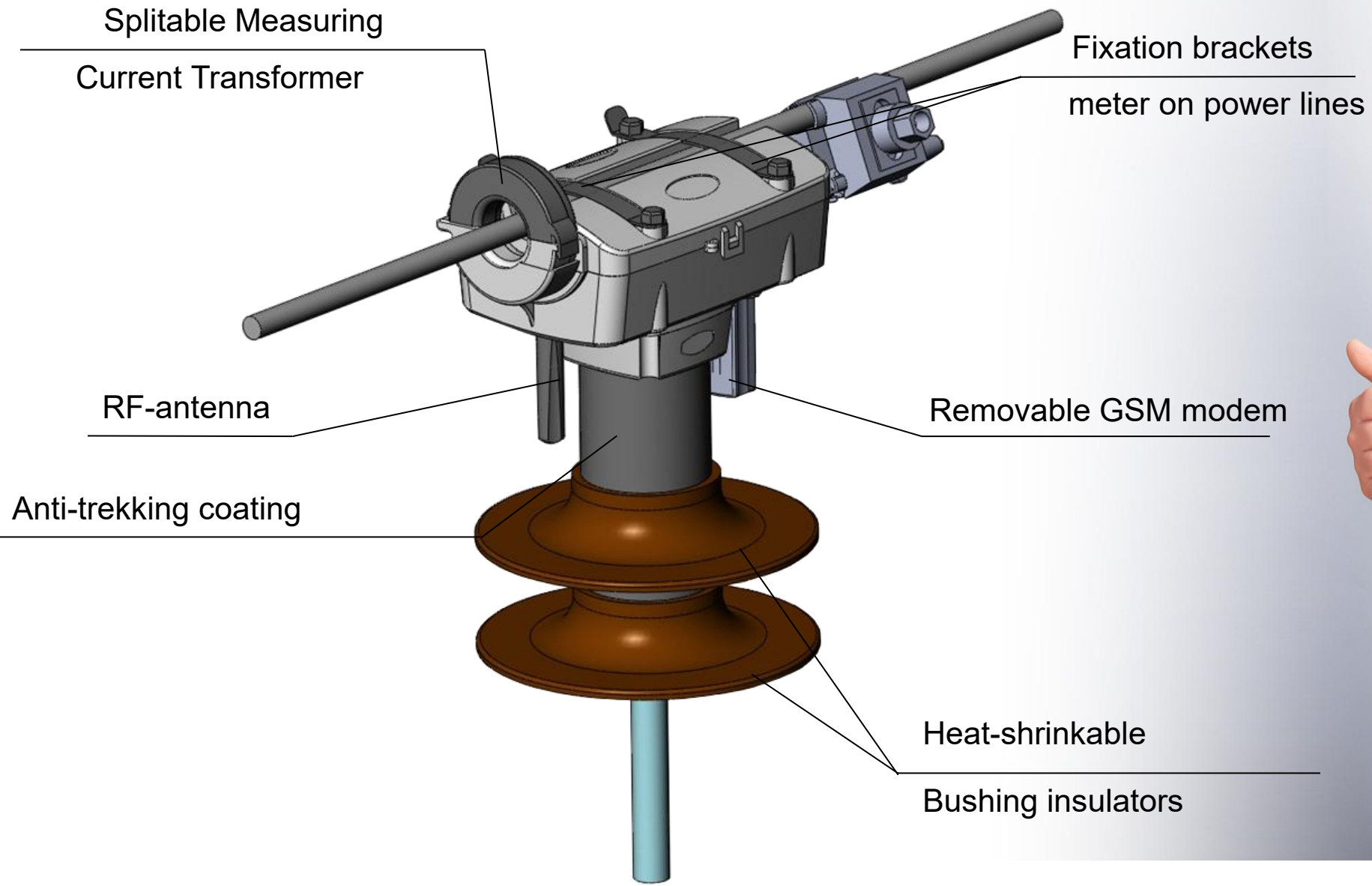
**“AkU”**  
***Features***







# Features

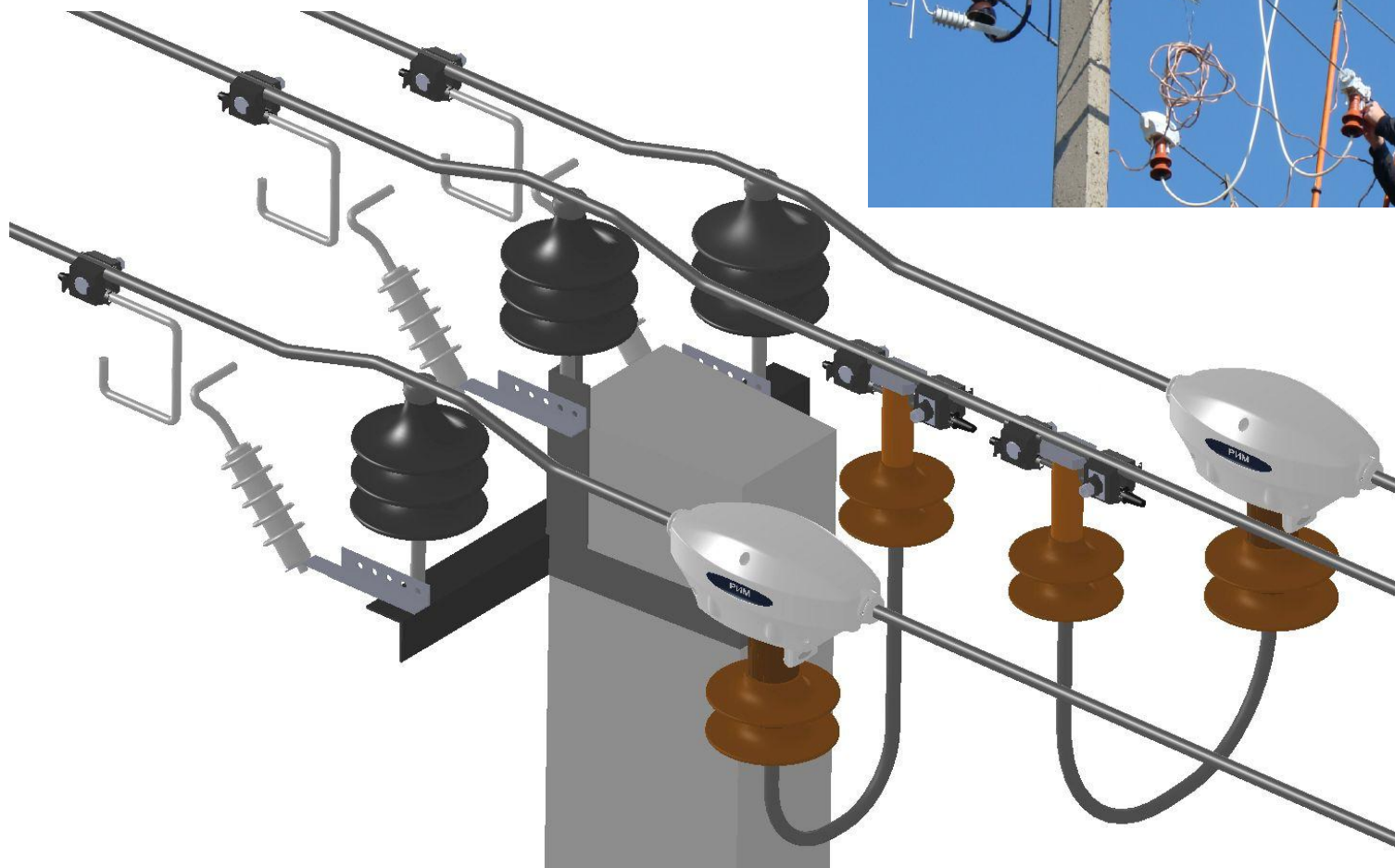


**“AkU”**  
***Construction***





# Installations



**“AkU”**  
*Installation*



AKANKSHA is one of the leading companies in the world which provides “**End-to-End**” solutions for AT&C Loss reduction initiatives

?



Thank you

Bipin B Dasmohapatra  
+91 9370345000